

Reliable Solutions for Better Animal Care

Bionet Products for Animals

Empowering Life
with Digital Healthcare Solutions



Product Category



Patient Monitoring Solution



Wireless Monitoring Solution



Wireless Handheld Ultrasound

bionet

Copyright © Bionet Co., Ltd. All Rights Reserved.

Health and Innovation Partner, Bionet[®]



We, Bionet, as a manufacturer of professional medical devices, have made designing veterinary monitoring systems an important project due to their different applications, calibrations, and specific usability requirements.

Based on our extensive experience spanning more than a decade in the veterinary monitoring market in the US and other countries, Bionet has accumulated significant technical and clinical know-how for veterinary patient monitoring.

We now hold a solid No. 1 position in the US market as a truly leading veterinary patient monitoring provider.

Multi-parameter Patient Monitoring Solution[™]

Brio X VET Series



See **more**, Decide **better** : Elevate Veterinary Critical Care

Slim, lightweight, and easily manageable in bustling, complex, and potentially contaminated environments.

Standard Features

- ECG, SpO₂, NIBP, RESP, 2CH-IBP, and 2CH-TEMP

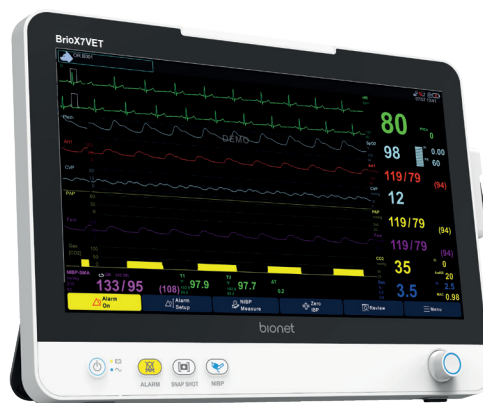
Optional Enhancements

- Suntech NIBP, 7CH-ECG, EtCO₂, Dual Gas Sensor(EtCO₂/AG), 2CH-IBP, and a Printer



Brio X3VET

8" Capacitive Touchscreen with 5 Waveforms



Brio X7VET

15.6" Wide Capacitive Touchscreen with 7 Waveforms



Brio X5VET

12.1" Wide Capacitive Touchscreen with 7 Waveforms

Multi-parameter Patient Monitoring Solution[®]

Extended Monitoring Software

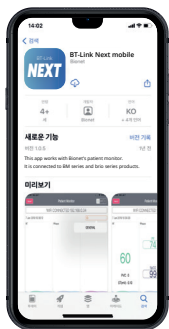
A central monitoring solution for animals enables simultaneous monitoring of multiple patients, supporting various connections, and offering remote control capabilities. Additionally, a wireless mobile solution is compatible with iOS and Android, providing real-time monitoring and data capture.



■ **BT-Link Next** Central Monitoring Solution for Animals

Grasp the Multiple Patients at a Glance

- Works with Brio XVET & BM VET series
- 32 monitoring display in one LCD monitor(32")
- Up to 64 monitoring connections(Dual Monitor)
- Up to 16 monitoring connections(Wireless)
- HL7 interface
- Remote control for connected monitors
- Comprehensive patient data management



■ **BT-Link Next Mobile** Wireless Monitoring Solution

Empower Mobility, Efficiency and Insight

- Free to download from iOS, Android App stores
- Works with Brio X Vet / BM Vet elite / BM Vet Pro series
- Real-time remote monitoring under the same network
- Capture numeric data and waveforms in image format
- Record patient trends and save them as PDF files

Dedicated Patient Monitoring Solution[■]

■ **BMVET Elite** Veterinary Patient Monitors

Solid & Reliable Patient Monitoring System

- Bright back-lit LCD with full touchscreen
BM7/5/3VET : 12.1" / 10.4" / 8"
- ECG, SpO₂, NIBP, RESP, TEMP(BM3VET),
*2CH-TEMP, *2CH-IBP
- Option : EtCO₂ / Dual-gas module
- Direct HL7 interface
- Easy cart & wall mount installation
*BM7/5VET only



■ **Oxy9Wave VET** Veterinary Pulse Oximeter

Veterinary Pulse Oximeter in the Palm of Your Hand

- 3.5" Bright Color LCD display
- Parameters : SpO₂, Pulse rate,
Perfusion index, Pulse rate waveform and Plethysmograph
- Vertical & Horizontal display mode
- Rechargeable Li-ion battery up to 15 hrs of use
- Patient data storage with 10 sec intervals up to 30 days
- Effortless data transfer to PC via USB drive
- Convenient data transfer via BLE(Optional)



■ **Dual Gas Sensor** EtCO₂ / Anesthetic Gas Monitoring Module

Add-On Patient Safety During Surgery

- Etco₂ + 1 gas agent selection of Iso, Sev, Enf, Hal, Des
- Fast 30-second warm-up and response time
- Infrared(IR) light source with optical bandpass filtering
- Advanced pneumatics and filtering system
- Affordable reusable water-trap system with water level detection



Wireless Monitoring Solution



O'Pet Curv Wearable Monitoring Sensor

Boundless Freedom of Patient Monitoring

- ECG, HR, RR, Skin TEMP
- Continuous 72 hrs monitoring
- Easy to apply hydrogel adhesive with biocompatibility test approved
- IPX68 water-proof design
- Clear LED indicator for power status

PRODUCT COMPONENTS



O'Pet Curv
Wearable vital sign sensor



Biocompatibility
hydrogel adhesive



Charging Cradle



Reusable Electrode



O'Pet LinkVue Monitoring and Management App

- Connect up to 6 patients at a glance
- Easy & low learning curve of pairing, monitoring and recording
- Comprehensive report format including vital signs chart and ECG waveform
- Seamless remote monitoring system with real-time data transfer to AWS server
- Free to download from iOS, Android App stores



O'Pet StationVue Central Monitoring App

- Real-time central monitoring system for PC or mobile devices
- Centralize 12 patients in one PC (recommended up to 24 patients)
- Easy & low learning curve of pairing, monitoring and recording
- Comprehensive report format including vital signs chart and ECG waveform
- Seamless remote monitoring system with real-time data transfer to AWS server
- Free to download from iOS, Android App stores

Wireless Handheld Ultrasound

■ SonoMe VET Wireless Handheld Ultrasound



Go Wireless, Scan Easy

Ultrasound with a Fully Loaded System

- B, B/M, Color, PDI, PW modes integrated in the SonoMe VET App
- Image optimization, measurements, and annotations
- Image storage as JPG and MP4 on paired mobile devices

Ultrasound Near You

- Available on iOS & Android
- No additional cost for application activation, registration, or user additions

Ultrasound without Time or Space Restrictions

- Wi-Fi based connections with smart devices
- Powerful battery operation: 2.5 to 5 hrs of freedom



H5C10L



H5C



H10L



14L



5C



10L



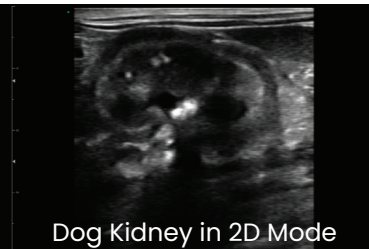
5CB



10LB



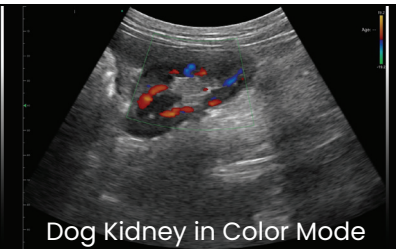
Dog Liver in 2D Mode



Dog Kidney in 2D Mode



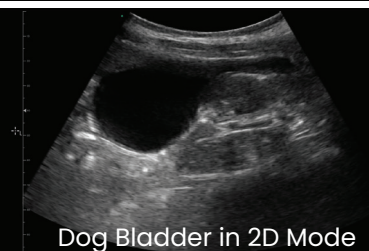
Dog Kidney in 2D Mode



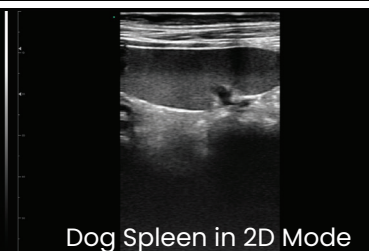
Dog Kidney in Color Mode



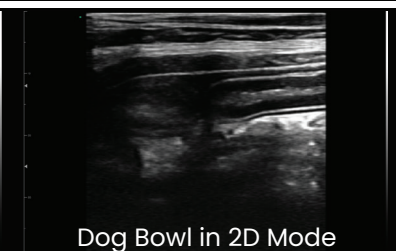
Dog UB Stone in 2D Mode



Dog Bladder in 2D Mode



Dog Spleen in 2D Mode



Dog Bowl in 2D Mode

Choose from 8 models for various applications



Bionet Products for Animals

Connecting Healthcare for Life



**Headquarters
Bionet Co., Ltd.**

5F, 61 Digital-ro 31-gil,
Guro-gu, Seoul, Korea 08375
TEL. +82 2 6292 6410

E-Mail. info.sales@ebionet.com(International)
domestic.sales@ebionet.com(Domestic)